

Sojiro Norizuki, the telescope expert from Yaizu city, who enabled us to dream of technological horizons.

Sojiro Norizuki

[1912 – 1995]

Japanese radio astronomy is said to be top class in the world. It was Sojiro Norizuki from Yaizu who played a vital role in the development of Japanese radio astronomy through his expertise in telescope.

In 1951, Japan's first equatorial mount parabolic telescope made by Mr. Norizuki was installed at the Nagoya University. He produced many other telescopes which obtained significant results. Then this achievement played an important role to produce new astronomers. Eventually, he started making optical telescopes, and the total number of telescopes he made in his lifetime amounted to 350 units. The 80cm caliber reflective telescope which was made in 1993 became his last work. It is now opened to the public at Discovery Park Yaizu.

Mr. Norizuki died in 1995. But even today six of the nine optical telescopes he made are still being utilized. We are sure that many people will be enchanted by space through his telescopes.



Hold up your smart phone over here!!



Astronomical Science Museum

■ **Open hours:** 9:00 – 17:00 on weekdays; 10:00 – 19:00 on Saturdays, Sundays and National holidays
Mondays (if Monday is a holiday, the next day will be closed),
Year end and New Year holidays
※ The center may be closed occasionally for certain reasons.

Planetarium (2nd-3rd Floor) ■ Admission fee: Adult (16 years or older): 600 yen, Child (4 to 15 years old): 200 yen		
Show times	Weekdays	Saturdays, Sundays, National holidays
9:15	(For group visitors)	—
11:00	Planetarium show	Kids' Planetarium
12:30	(For group visitors)	CG Dome Theater
14:00	CG Dome Theater Healing	Planetarium show
15:30	(For group visitors)	CG Dome Theater
17:00	—	CG Dome Theater Healing

※ Admission in the middle of the show is not allowed. ※ For certain reasons, the show may be suspended, or the show time/content may be changed. ※ Schedule for shows are available on the website. ※ Children aged 3 and under are free, but please let him or her sit on the parent's lap.

Astronomical Observatory (5th Floor)

Content	Time	Admission fee
Observatory tour	Weekdays	15:00
	Saturdays, Sundays, National holidays	14:00~16:00
Starlit Sky Gazing Event	Saturdays, Sundays	19:00 (Held after closing)
※ By reservation only. Canceled on rainy or cloudy days.		4 years or older: 100 yen Annual Passport: 400 yen

※ It may be canceled due to special events etc.

Exhibition and Experience Room (1st Floor)

	Time	Admission Fee
Weekdays	9:00~16:30	Adult (16 years or older): 300 yen Child (4 to 15 years old): 100 yen
Saturdays, Sundays and National holidays	10:00~17:30	

■ **Group discount** For a group of 30 persons or more, the admission fee will be discounted by 20%.

Other discounts and exemptions

For visitors who can show the Physically Disabled Certificate, Rehabilitation Certificate or Mentally Handicapped Certificate, the admission fee will be discounted by 50%. For their helpers, one helper per one such disabled visitor will be exempted from paying the admission fee.

For visitors such as schools using this facility for educational purpose, the admission fee for the children will be discounted to 50%, and that of the conductor(s) will be exempted.

ACCESS

Bus

About 25 minutes by Line-3 Bus "Ishiki-Wadahama Line (Wadahama Route)" from the South Exit of JR Yaizu Station. About one-minute walk from the "Discovery Park Yaizu" bus stop.

Taxi

About 20 minutes from the South Exit of JR Yaizu Station

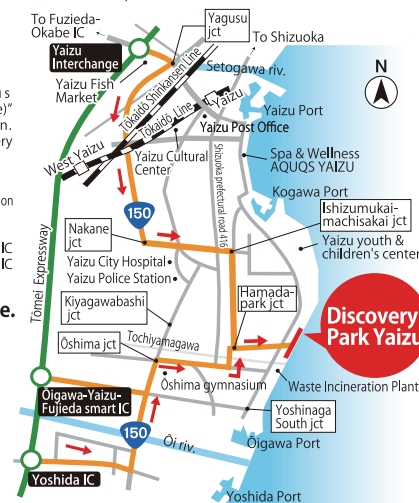
Car

About 20 minutes from Yaizu-Fuji Smart IC or about 25 minutes from Yaizu IC or Yoshida IC of Oigawa Line on the Tomei Expressway.

A free parking area is available.



Read the QR code and link it, the map will be displayed.
※ Please note that packet communication fee will be charged.

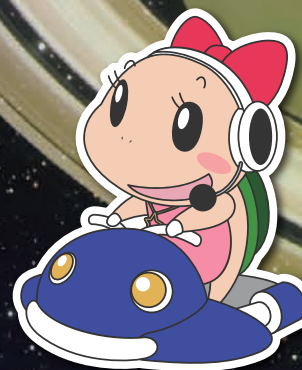


ディスカバーパーク焼津 天文科学館
Discovery Park Yaizu Astronomical Science Museum

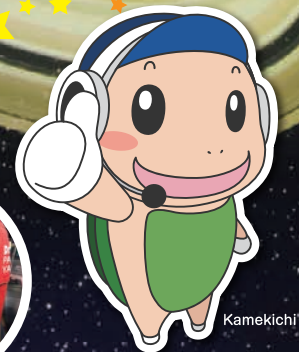
2968-1 Tajiri, Yaizu, Shizuoka (Postal code 425-0052) TEL.054-625-0800

HP <https://www.discoverypark.jp> @Discovery_Yaizu

Discovery Park Yaizu Astronomical Science Museum



Mascot character Kameko



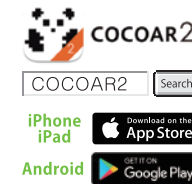
Kamekichi

Let's explore the mystery of space!



Introduction video of Discovery Park Yaizu How to use AR App "COCOAR2"

1 Download COCOAR2 App (free of charge).



2 Set the total image for the marker inside the green circle, and wait a while for auto-focusing.



Once the image is successfully scanned, the movie will start playing automatically.

5th Floor

Mt. Fuji Viewpoint

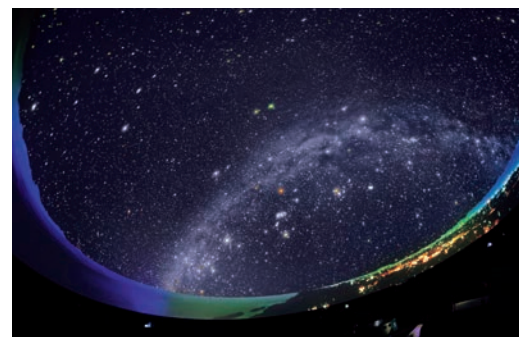
Roof Top Observation Space



Amaze at the grand panoramic view of Mt. Fuji, Nihon-daira and Izu peninsula overlooking the Suruga Bay. Also, let's look for constellations during the Star Gazing Event from this space.

2nd・3rd Floor Planetarium

In this state-of-art planetarium, you can enjoy gazing a star-filled night sky and high-resolution computer graphics. You will surely be astonished by the spectacular view!



GEMINISTAR III YAIZU

"GEMINISTAR III YAIZU" is a state-of-the-art planetarium where you can experience the authentically reproduced, beautiful starlit sky as seen by human eyes, and the spectacular image reproduced in the semispherical 360 degree direction. Several shows are played in a day and people of all ages can enjoy this planetarium. The program schedule can be checked on our website

Moving image



1st Floor Exhibition and Experience Room

You can enjoy learning science with a lot of hands-on exhibited items. Exhibitions vary with the seasons. Trial shows are organized on Saturdays, Sundays and National holidays.

Amusing Science Experiment Show

This is an experimental show in which people of all ages can participate. The theme of a play varies with seasons.

Try and Discover! Naze-naze Factory

This is an easy workshop where you can try making articles with the help of the staff. You can take your handmade work back home.

Moving image



Let's seek the Wonder ★Curiosity ★Discovery associated with space and science at the Astronomical Science Museum Discovery Park Yaizu

This is a planetarium where children can enjoy during the "Kid's Planetarium" on Saturdays and Sundays.

Wow! How big the telescope is! The opening and closing of the dome is so cool!

Tajirihama Beach

If you step out to Tajirihama Beach, you can enjoy the panoramic view of Suruga Bay, Mt. Fuji and Izu peninsula.



5th Floor

Astronomical Observatory

Let's observe the sky through the massive, top-class telescope in the Tokai area made by Mr. Sojiro Norizuki from Yaizu, the world famous fabricator of astronomical telescopes.

Moving image



Tour of Astronomical Observatory (You can apply for the Tour on the spot)



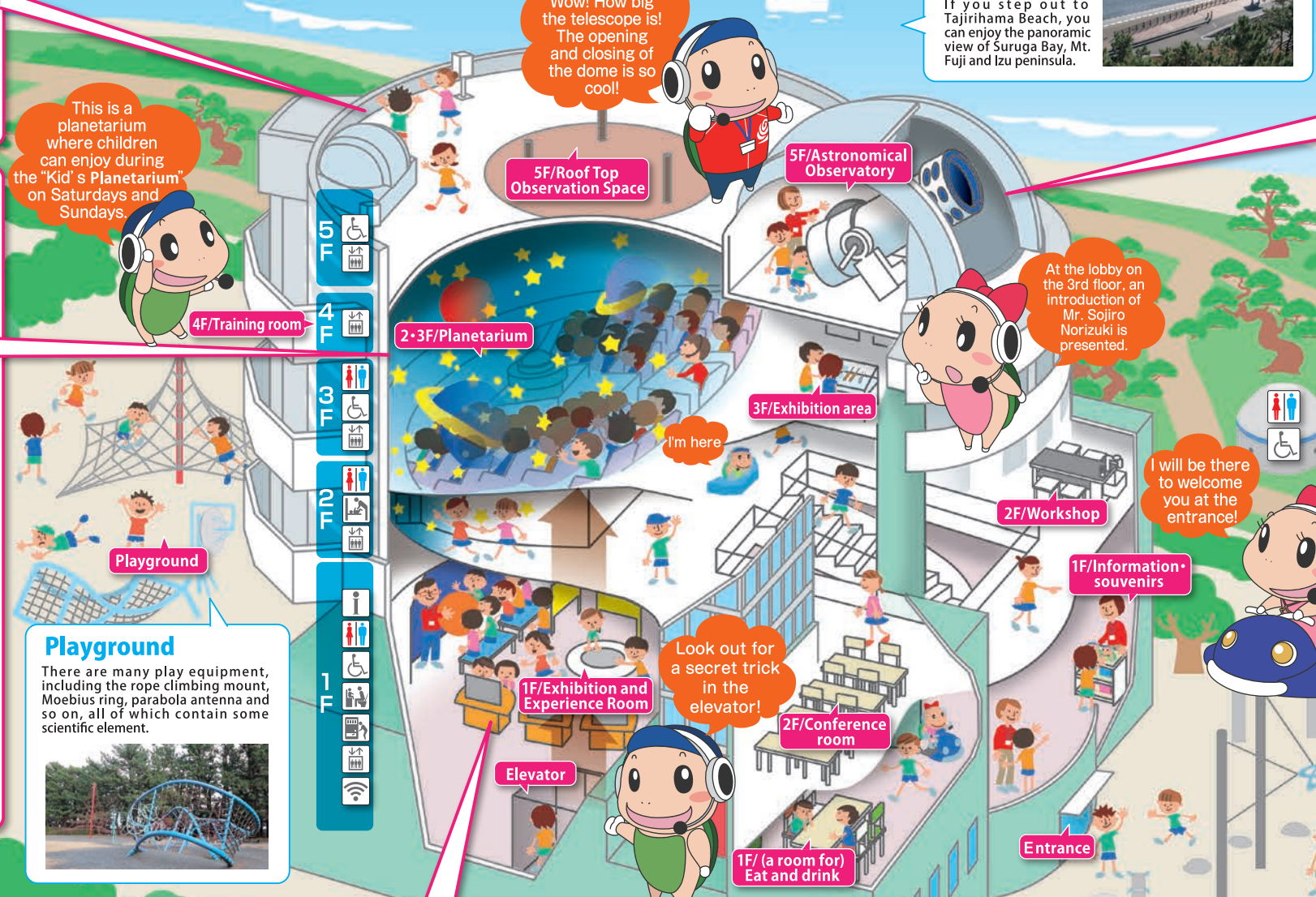
Starts at 14:00 and 16:00 on Saturdays, Sundays and National holidays, and 15:00 on weekdays (Duration: about 15 minutes)

Information about the astronomical telescope and the astronomical observatory equipment are given. If the weather is good, you can see stars through the telescope even in the daytime!

Star Gazing Event (Reservation necessary)

Starts at 19:00 (about 90 minutes) on Saturdays and Sundays
※Canceled on rainy or cloudy days

Let's observe the perfect-for-viewing celestial bodies and look for constellations using the big telescope. Reservation can be made from one month before the day of visit.



Steppingstone Walking Path

Steppingstone Walking Path

A steppingstone walking path paved with natural stones of different sizes covers a total distance of 66m. It is strangely comfortable, even though the sole of the foot hurts.



Hot Water Swimming Pool (Suimukan)

There are various types of hot water swimming pools, including an official pool with 8 courses (25m), a small pool, a pool for children and a pool with water slider.



Icon Explanation



Restroom



Wheelchair



Diaper-changing



Baby keeping gear



Information



Vending machine



Elevator



Free Wi-Fi

Moving image Read the QR code to see the movie!

※Please note that packet communication fee will be charged.

